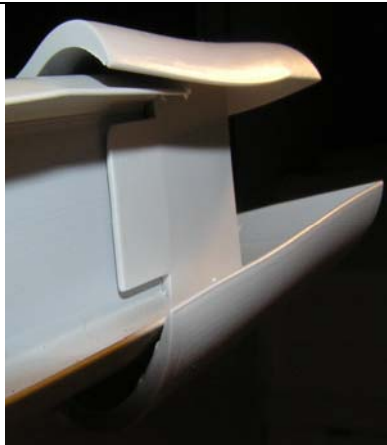


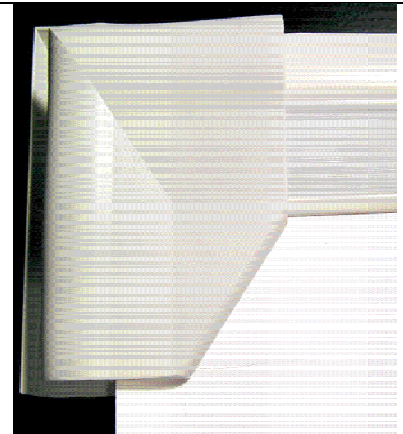
### Introducing the **Patented Corner Seal** (patent#6,527,278 B1)

Designed to eliminate wasteful Miter Cutting and the labor-intensive process of the competing corner seal assembly. Easy 4-step process to increase your line efficiencies.



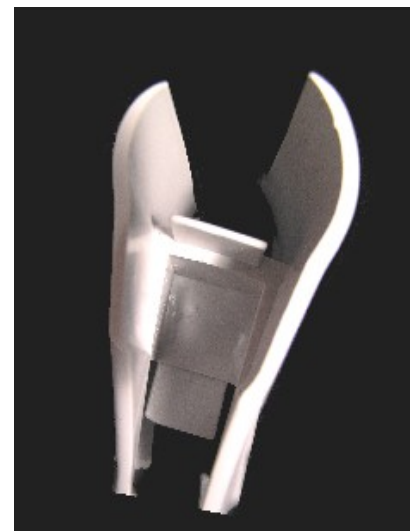
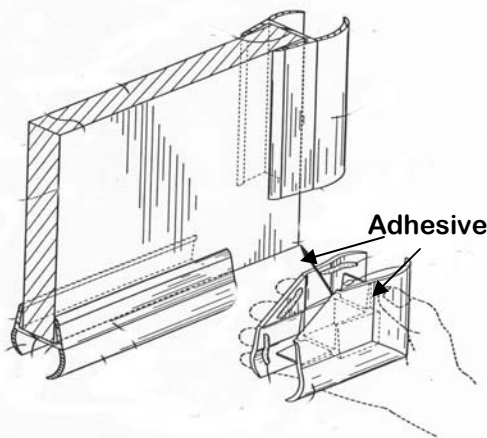
### Recommended 4-Step Installation

1. Wipe Surface free from dirt and debris with wet cloth, let dry.
2. Measure Door and Cut Gasket: Recommended cut Lengths for desired gap per door side
  - \* Cut gasket 1 1/2" short for result of No Gap from seal to corners
  - \* Cut gasket 1 9/16" short for result of 1/32" Gap from seal to corners
  - \* Cut gasket 1 5/8" short for result of 1/16" Gap from seal to corners
3. Generously apply glue to wood, both steel surface sides, seal gasket and tab area. Corner Tab should be exposed on top of gasket. *We recommend Sea-Lok Glue or comparable brand.*
4. Crimp sides for 15 seconds to allow glue to dry.



**3/4" Part # 527278**  
**1/2" Part #527250**

**Reduce Labor**



**U.S. Office**  
 5765 S. St. Rt. 48, Bldg 110  
 Suite 131  
 Maineville, OH 45039  
 Ph 888-893-1643  
 Fx 888-893-1643  
 sales@norstarintl.com

**For more information,  
 call, email or visit us  
 on the web at  
[www.norstarintl.com](http://www.norstarintl.com)**

**China Office**  
 1565 Jiao Tong Rd. Rm 1606  
 Tong Lian Bldg,  
 Pu Tuo  
 Shanghai, China 200065  
 Ph 86-21-5653-1608  
 Fx 86-21-5653-1607